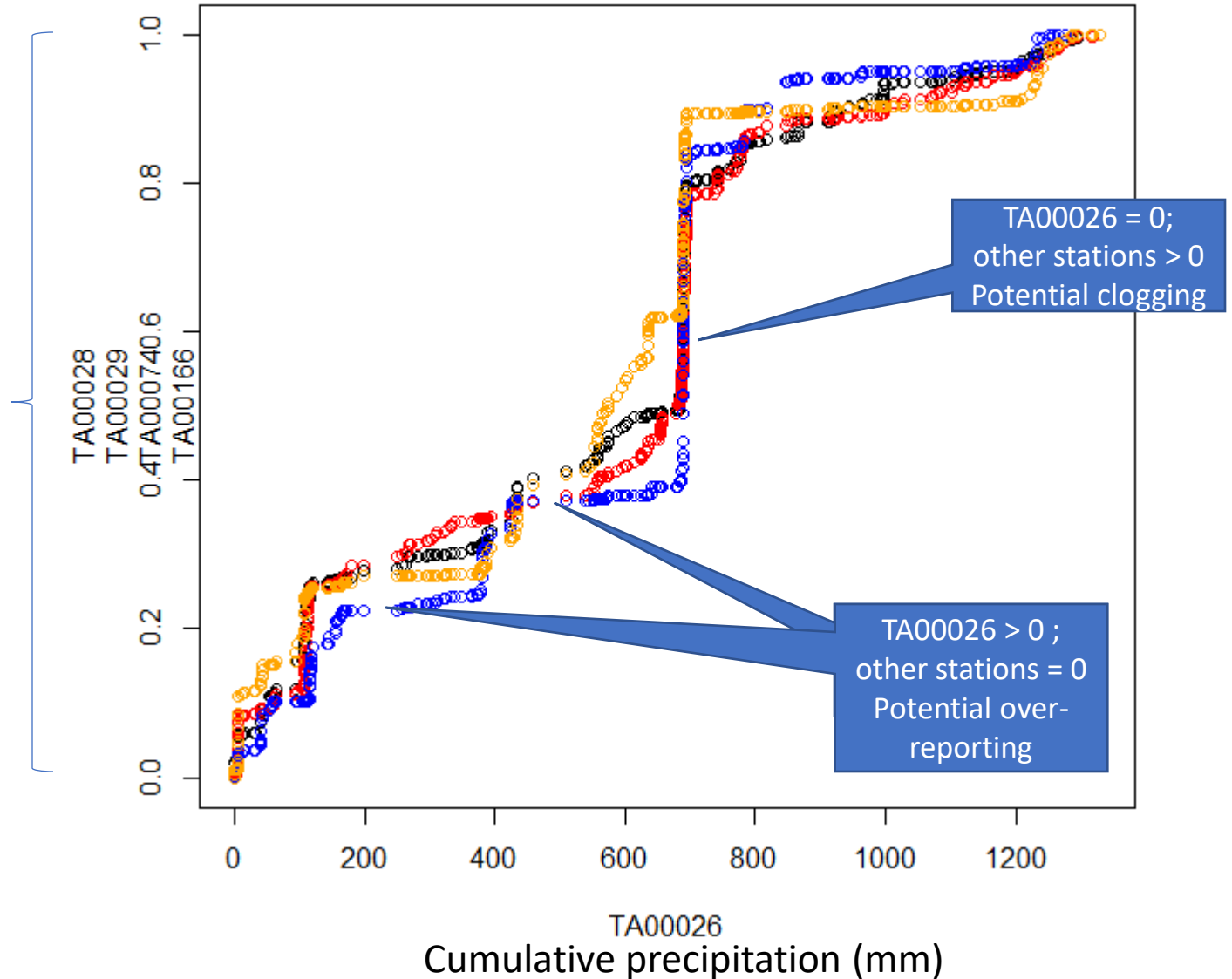


Multiple double-mass plot 2023-01-01 to 2024-12-02

- Target station: TA00026
- Contrast stations: TA00028, TA00029, TA000074, TA00166

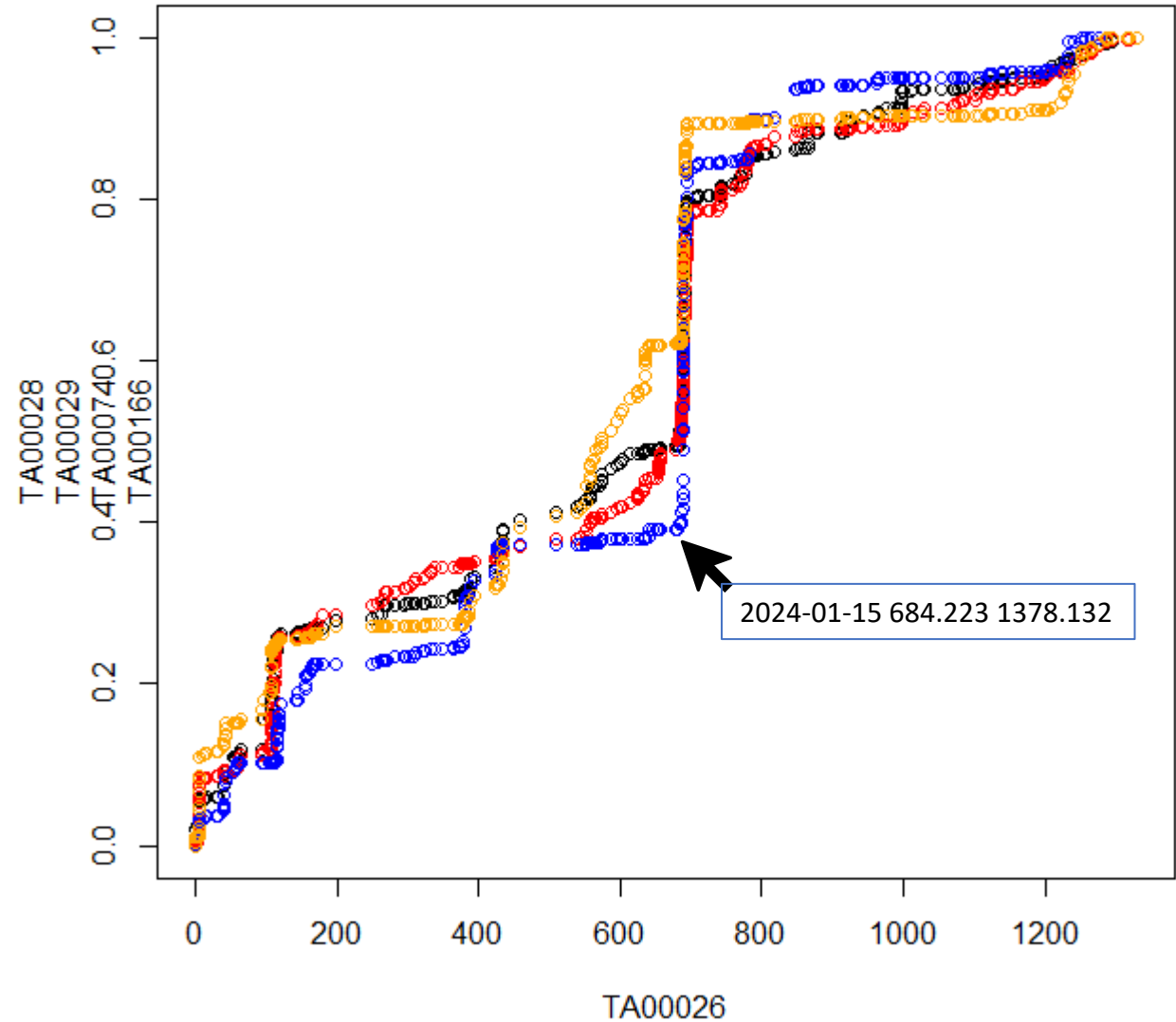
Cumulative precipitation normalized to [0,1]

The differences in vertical position reflect different rates of accumulation during different parts of the year
Dry periods correspond to many points on top of each other
All curves start at (0,0) and end at (1330.738, 1)



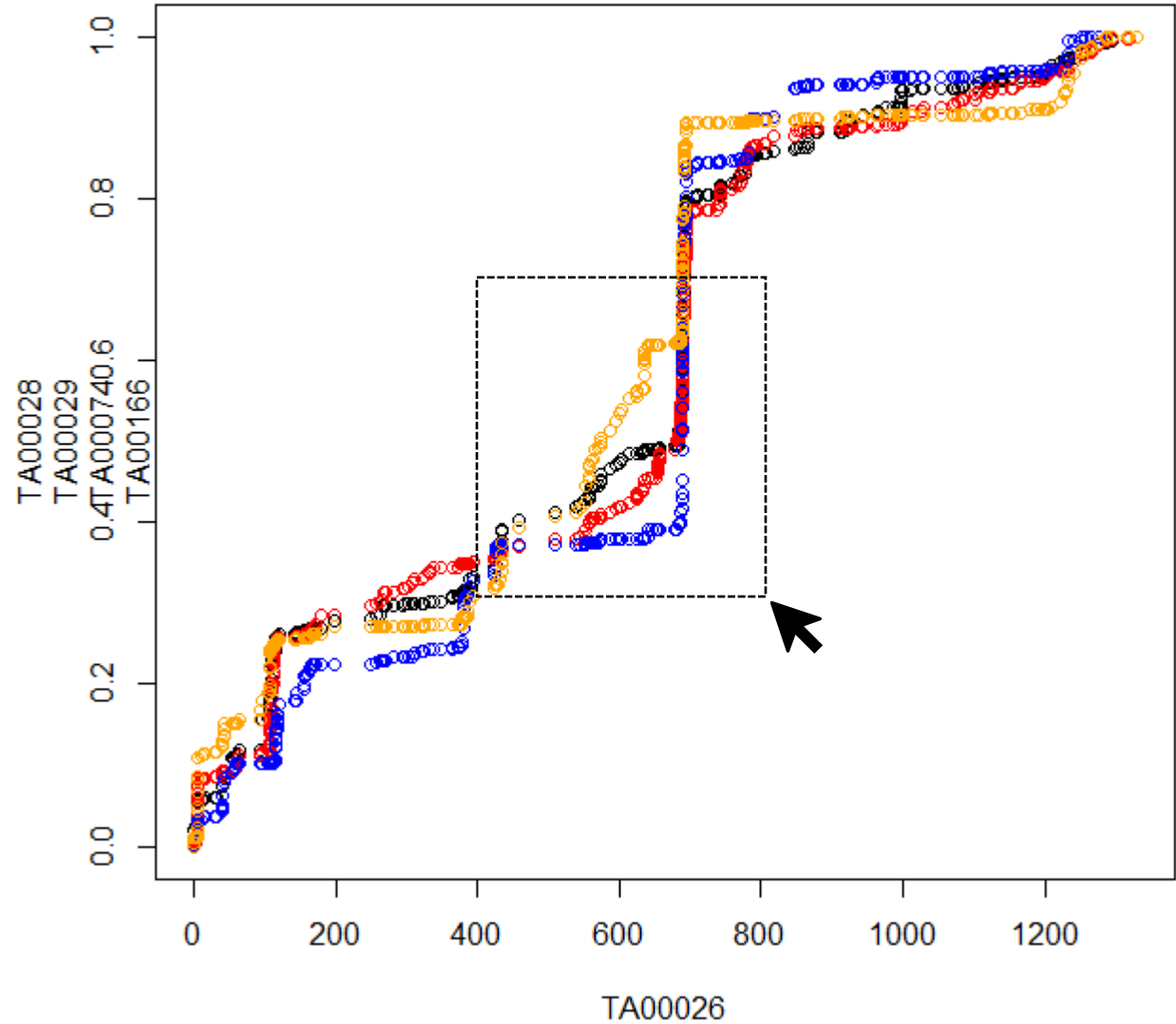
Desired Affordances

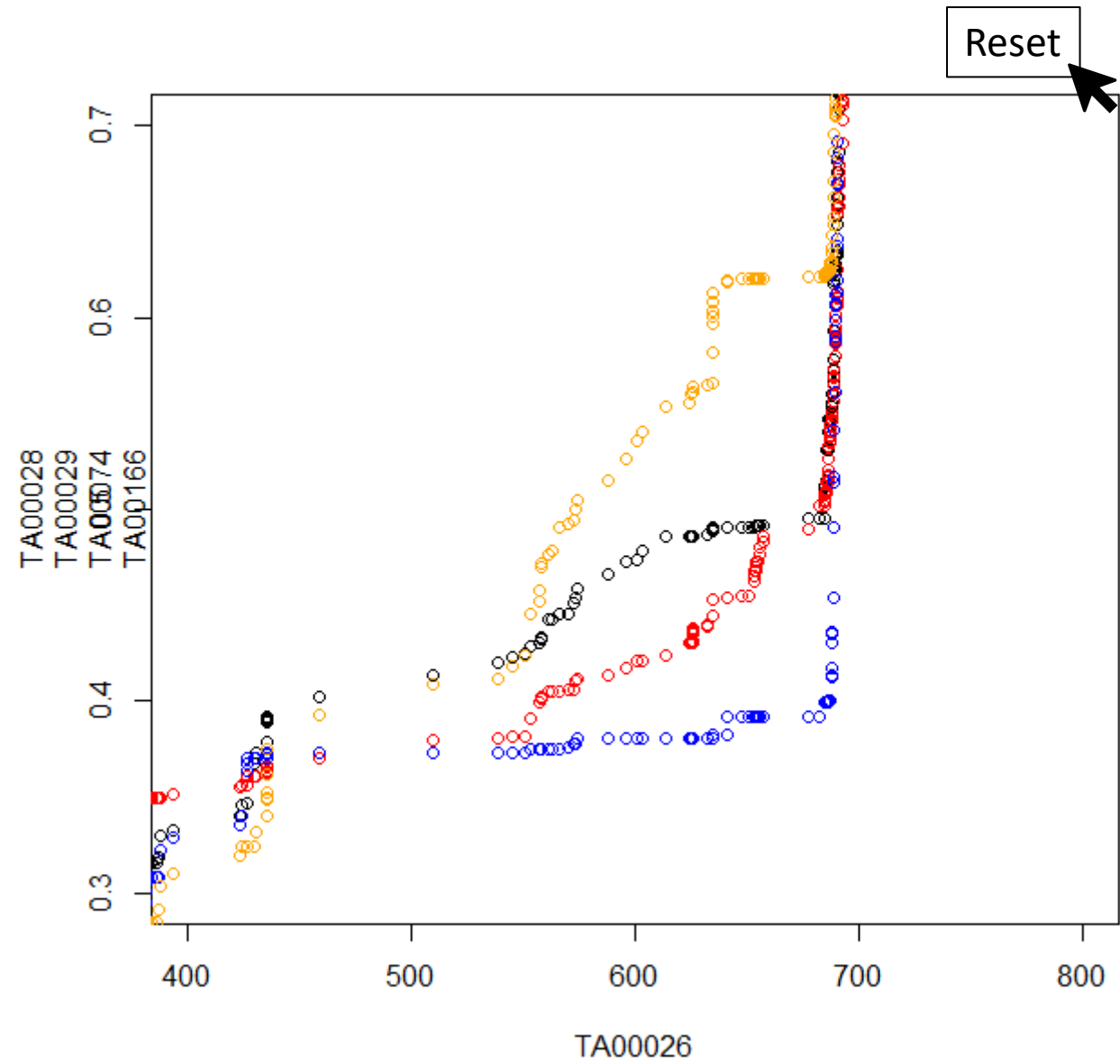
- Mouse-over point shows date, precipitation values for target station and selected contrast station



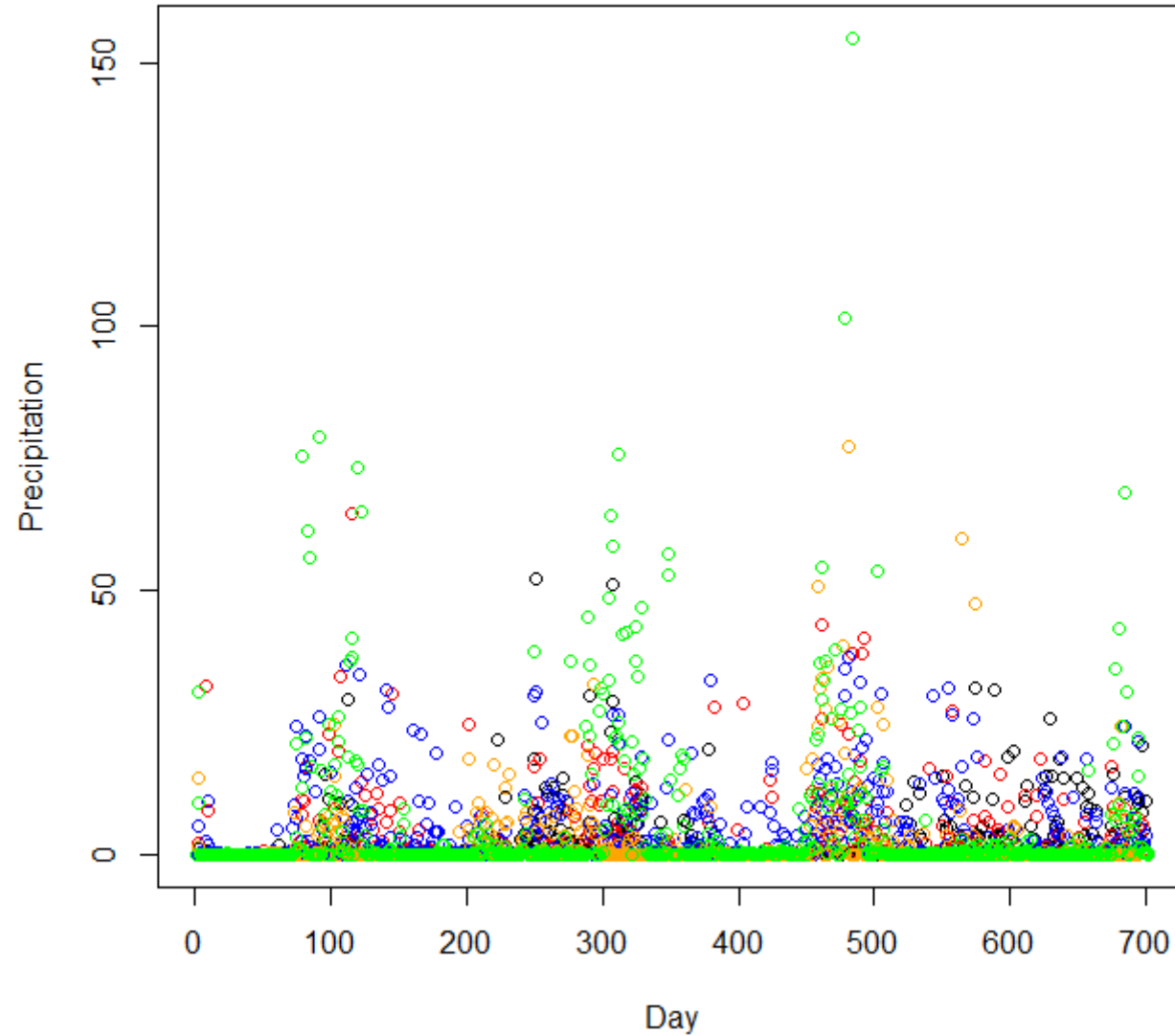
Desired Affordances

- Rectangle select to zoom in
- Restore button to return to original view





Alternative Time-Series View



Not very useful

Alternative: Cumulative Time Series View

- I manually marked the start and end of some flat periods. Do these correspond to the dry season in Kenya?
 - TA00026 = black
 - TA00028 = blue
 - TA00029 = red
 - TA00074 = orange
 - TA00166 = green
- TA00026 seems to be clogged from 2024-04 through 2024-06
- Is TA00166 clogged from 2024-06 through 2024-11?

